

Blast Chiller Freezers Crosswise Blast Chiller-Freezer Crosswise - 100 kg 20GN 1/1 (R452A)

ITEM # _____

MODEL # _____

NAME # _____

SIS # _____

AIA # _____



729544 (ACBCFA100SE)

CRIO Chill Tech blast chiller & freezer 100kg, compatible with 20x1/1GN convection oven - R452A

Short Form Specification

Item No.

Blast chiller/freezer with digital temperature and time display. For 20 GN 1/1 or 600x400 mm trays (h = 65 mm). Load capacity: chilling 100 kg; freezing 65 kg. Automatic detection of food probe insertion. Automatic and Manual defrost. Blast chilling real remaining time estimation (A.R.T.E.). Turbo cooling function. Thawing function. HACCP and Service alarms with data logging. Connectivity ready. Operating air temperature: +10/-36°C. Single sensor food probe. Main components in 304 AISI stainless steel. Internal rounded corners and drain. Evaporator with antirust protection. Performances guaranteed at ambient temperature of +40°C. Cyclopentane insulation (HCFC, CFC and HFC free). R452a refrigerant gas (HCFC and CFC free). Built-in refrigeration unit.

Main Features

- Holding at +3 °C for chilling or -20 °C for freezing, automatically activated at the end of each cycle, to save energy and maintain the target temperature (manual activation is also possible).
- Blast Chilling cycle: 100 kg from 90°C up to 3°C.
- Freezing cycle: 65 kg from 90°C up to -36°C.
- Chilling cycle with automatic preset cycles:
 - Soft Chilling, ideal for delicate food and small portions.
 - Hard Chilling, ideal for solid food and whole pieces.
- Freezing cycle with automatic preset cycles, ideal for all kind of food (raw, half or fully cooked).
- Turbo cooling: chiller works continuously at the desired temperature; ideal for continuous production.
- Thawing cycle, ideal for defrosting food in a controlled and safe environment.
- Possibility to modify the cavity temperature in turbo cooling and thawing cycles.
- Remaining time estimation for probe-driven cycles based on artificial intelligence techniques (ARTE) for an easier planning of the activities.
- Single sensor core probe as standard.
- On-board HACCP monitoring capable.
- Performance guaranteed at ambient temperatures of +40°C (Climatic class 5).
- Automatic and manual defrosting.
- Tropicalized unit.
- 3-point core probe available on request (optional).

Construction

- IP21 protection index.
- No water connections required.
- Ventilator swinging hinged panel for access to the evaporator for cleaning.
- Waste water can be plumbed into drain, but can also be collected in an optional waste container.
- Built-in refrigeration unit.
- Main components in 304 AISI stainless steel.
- Evaporator with antirust protection.
- Automatic heated door frame.
- Door reversible on site.
- Door stopper to keep the door open in order to avoid the formation of bad smells (kit available to be mounted on site, depending on preferred door hinge).

User Interface & Data Management

- Control unit provides two large displays to read out: time, core temperature, cycle countdown, alarms, service information.
- Connectivity ready for real time access to connected appliances from remote and HACCP monitoring (requires optional accessory).

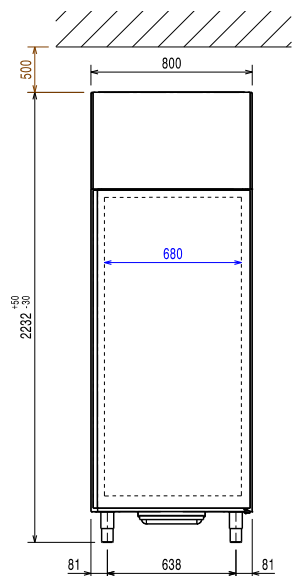
Sustainability

- High density polyurethane insulation, 60 mm thickness, HCFC free.

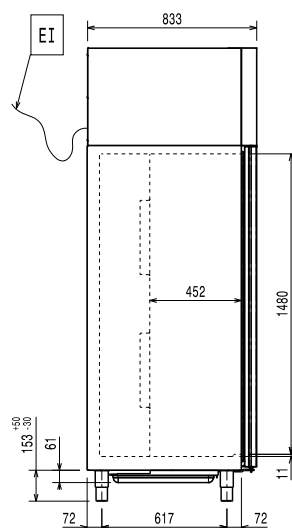
Included Accessories

APPROVAL: _____

Front

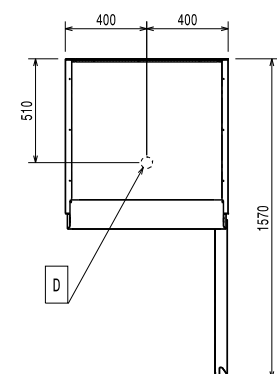


Side



EI = Electrical inlet (power)

Top



Electric

Circuit breaker required

Supply voltage: 380-415 V/3N ph/50 Hz

Electrical power, max: 4.4 kW

Installation:

Clearance: 5 cm on sides and back.

Please see and follow detailed installation instructions provided with the unit

Capacity:

GN: 20 - 1/1 containers

Number and type of grids: 20 (GN 1/1; 600x400)

Number and type of basins: 20 (360x250x80h)

Key Information:

External dimensions, Width: 800 mm

External dimensions, Depth: 833 mm

External dimensions, Height: 2232 mm

Net weight: 230 kg

Shipping weight: 268 kg

Shipping volume: 1.83 m³

Refrigeration Data

Refrigeration power at evaporation temperature: -20 °C

Condenser cooling type: AIR

Product Information (EN17032 – Commission Regulation EU 2015/1095)

Chilling Cycle Time (+65°C to +10°C): 100 min

Full load capacity (chilling): 100 kg

Freezing Cycle Time (+65°C to -18°C): 270 min

Full load capacity (freezing): 65 kg

Test performed in a test room at 30°C to chill/ freeze (+10°C/-18° C) a full load of 40mm deep trays filled with mashed potatoes evenly distributed up to a height of 35 mm at starting temperature between 65° and 80°C within 120/270min.

Sustainability

Refrigerant type: R452A

GWP Index: 2141

Refrigeration power: 5440 W

Refrigerant weight: 2400 g

Energy consumption, cycle (chilling): 0.0689 kWh/kg

Energy consumption, cycle (freezing): 0.2335 kWh/kg